

Route Description

Our offices are only 3 stops away from the Frankfurt Main Station and just a few minutes from the motorway (15 km from Frankfurt Airport).

Walking

From Frankfurt Main Station, turn right onto **Am Hauptbahnhof/Baseler Straße** and head southeast for around 800 m (you will cross the bridge along the way). Turn slightly right onto **Theodor-Stern-Kai** and after 700 m turn left onto **Carl-von-Noorden-Platz**. The building entrance is facing the plaza (1.5 km/10-15 min).

Public transport

From Frankfurt Main Station

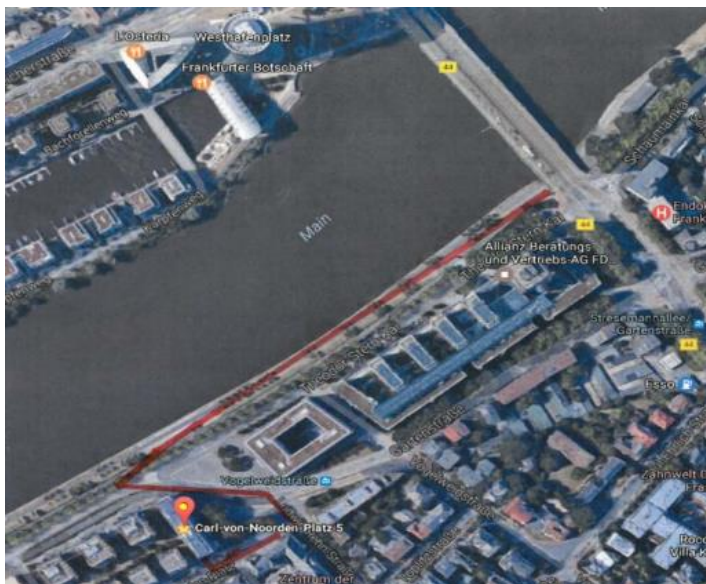
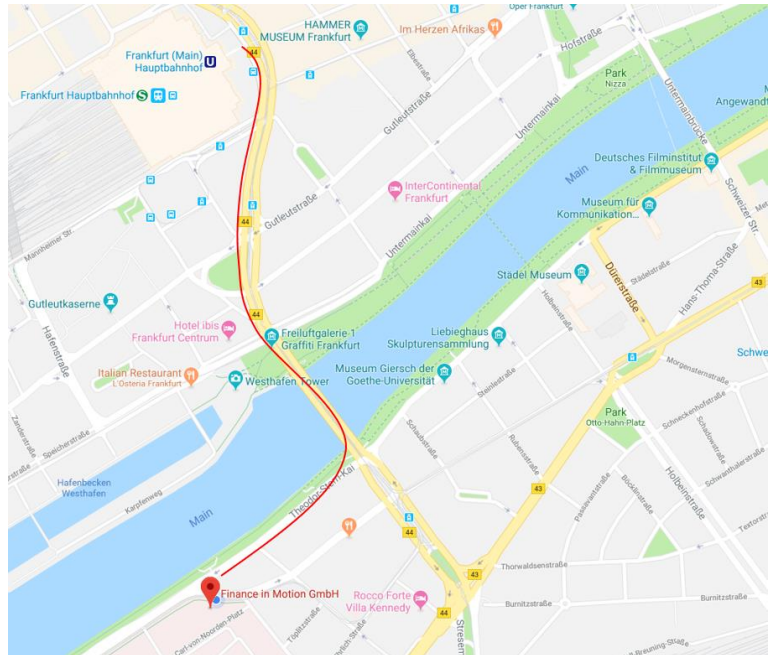
(every 7 min; travel time 6 min)

Take **Tram 21** toward **Stadion** and disembark at the third stop: **Vogelweidstraße**.

From Frankfurt Südbahnhof

(every 10 min; travel time 10 min)

Take **Tram 15** toward **Haardtwaldplatz**. Disembark at **Vogelweidstraße**.



By car

On Motorway A3, take exit 51 Frankfurt Süd toward Stadtmitte. After 3 km, you will find yourself on the Kennedyallee. At the main crossroads, turn left onto Stresemannallee toward Hauptbahnhof. After only 300 m, just before the bridge, left again to enter Theodor-Stern-Kai right along the River Main. After 700 m, take a sharp left into Vogelweidstraße; then right into Ludwig-Rehn-Straße; then right again onto Carl-von-Noorden-Platz 5.

Visitors can enter/leave the underground garage on the left side of the building. To access the garage, please press the button to speak with the receptionist. The receptionist will activate the automatic gate and indicate a parking space number. The car park uses car lifts: Please read the advisory displayed there regarding car height and weight restrictions.

Access to the building and our offices

The main access is through the main entrance on Carl-von-Noorden-Platz 5 (to the right of the restaurant "Dorade"). As our reception is located on the 6th floor, please ring the doorbell: Our receptionist will open the front door. Take the elevator to the 6th floor, where you will be greeted by our reception.